



West Northamptonshire Place Development November 2022



Vision and Ambitions

live your best life

1. Best start in life
2. Access to the best available education and learning
3. Opportunity to be fit, well and independent
4. Employment that keeps them and their families out of poverty
5. Housing that is affordable, safe and sustainable in places which are clean and green
6. To feel safe in their homes and when out and about
7. Connected to their families and friends
8. The chance for a fresh start, when things go wrong
9. Access to health and social care when they need it
10. To be accepted and valued simply for who they are



Live your best life

Northamptonshire Integrated Care System Operating Model

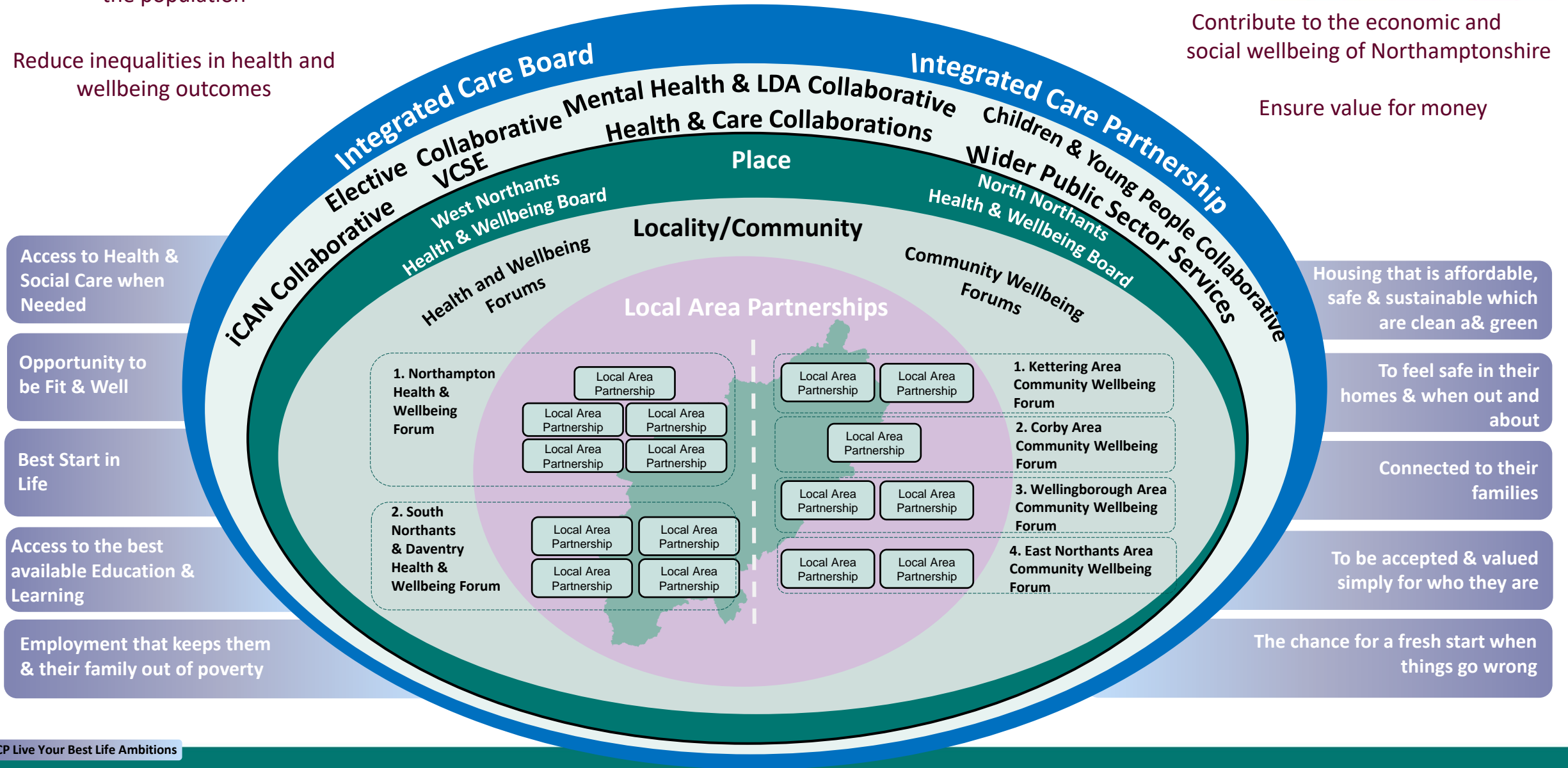
Integrated Care Northamptonshire

Improve the health and wellbeing of the population

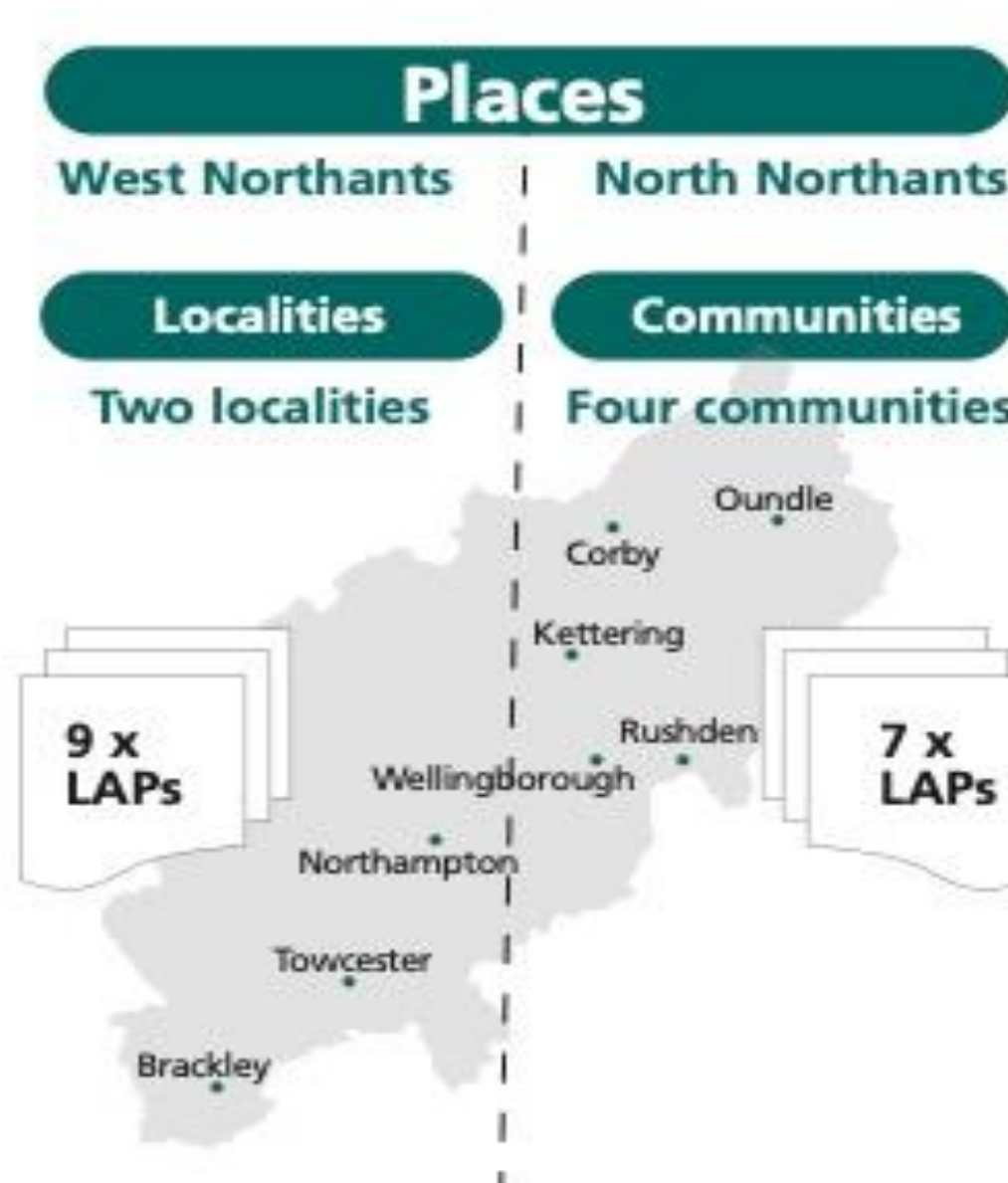
Reduce inequalities in health and wellbeing outcomes

Contribute to the economic and social wellbeing of Northamptonshire

Ensure value for money

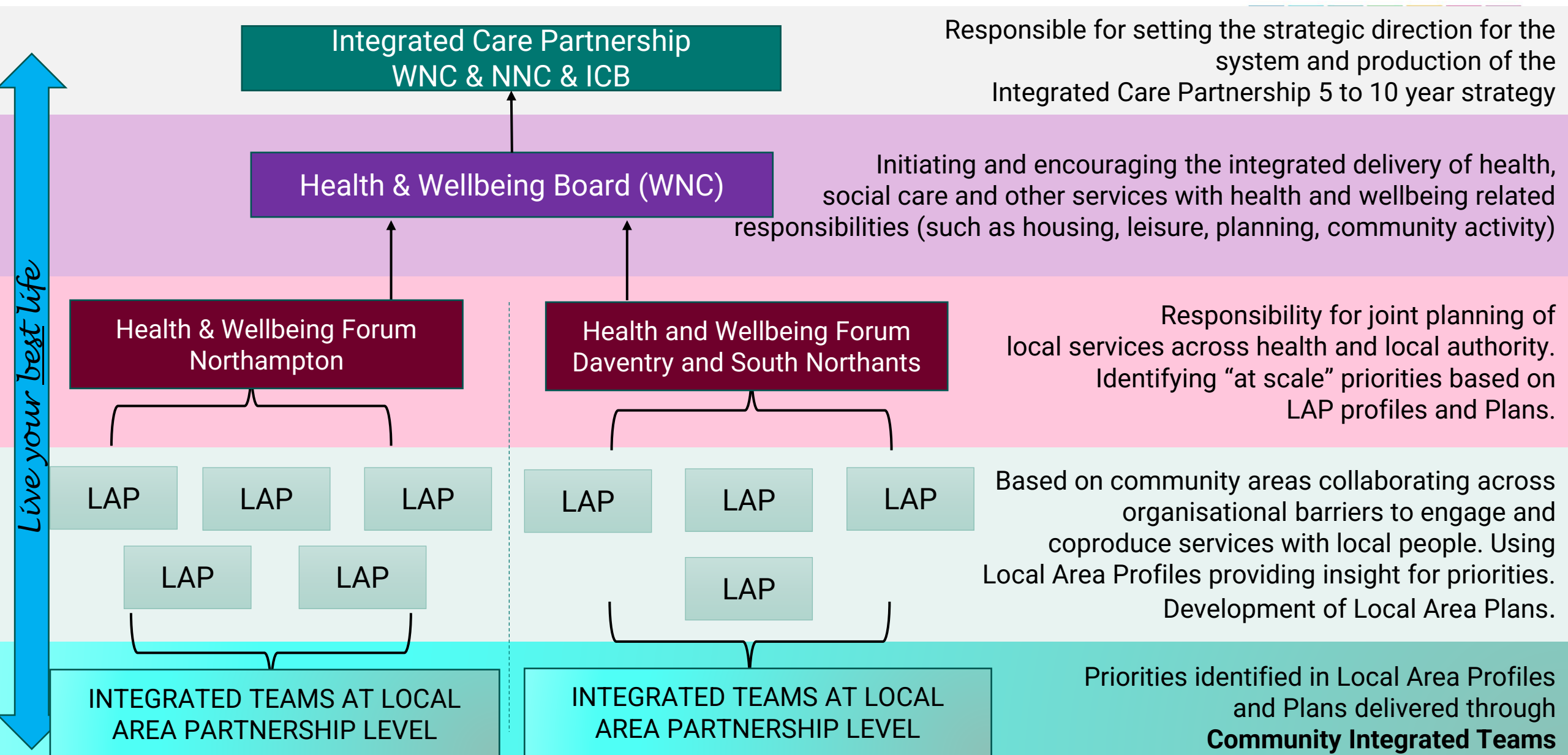


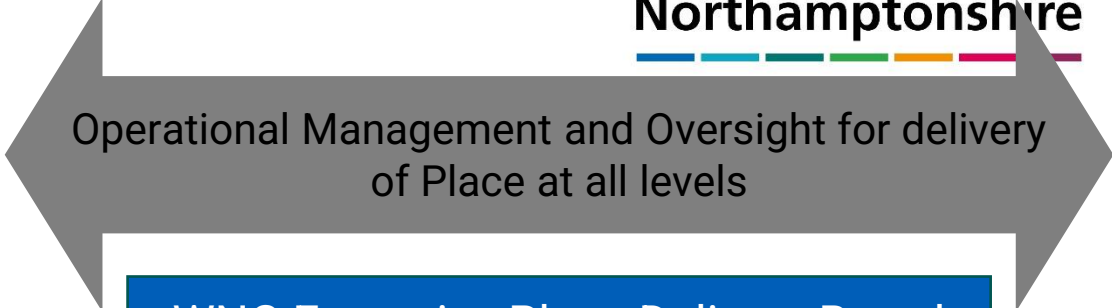
Northamptonshire's Approach to Place Development



WNC Place Operating Model

Integrated Care Northamptonshire





INTEGRATED CARE PARTNERSHIP

EST NORTHANTS
Health and Wellbeing Board
live your *best* life

WNC Executive Place Delivery Board

WNC Place Delivery Group

South Northants and Daventry Health and Wellbeing Forum

Northampton Health and Wellbeing Forum

LAP Development

VCSE Development

Locality Development

- Local Area Partnership
- Local Area Partnership
- Local Area Partnership
- Local Area Partnership

- Local Area Partnership
- Local Area Partnership
- Local Area Partnership
- Local Area Partnership
- Local Area Partnership

WNC Internal Service Development (formally LYBL Board)

Operational Delivery

WNC Place Delivery Group

- “Engine room” to ensure the ambitions for Place, Localities and Local Area Partnerships (LAPs) are realised.
- Activities aligned to ensure the delivery of LYBL ambitions and System Outcomes Framework
- Identify 2 Pioneer sites to accelerate delivery
- Initial core membership meeting weekly to oversee:
 - Locality development
 - LAP development
 - Local Area Profiles based on Insights data
 - Comms and engagement
 - VCSE development

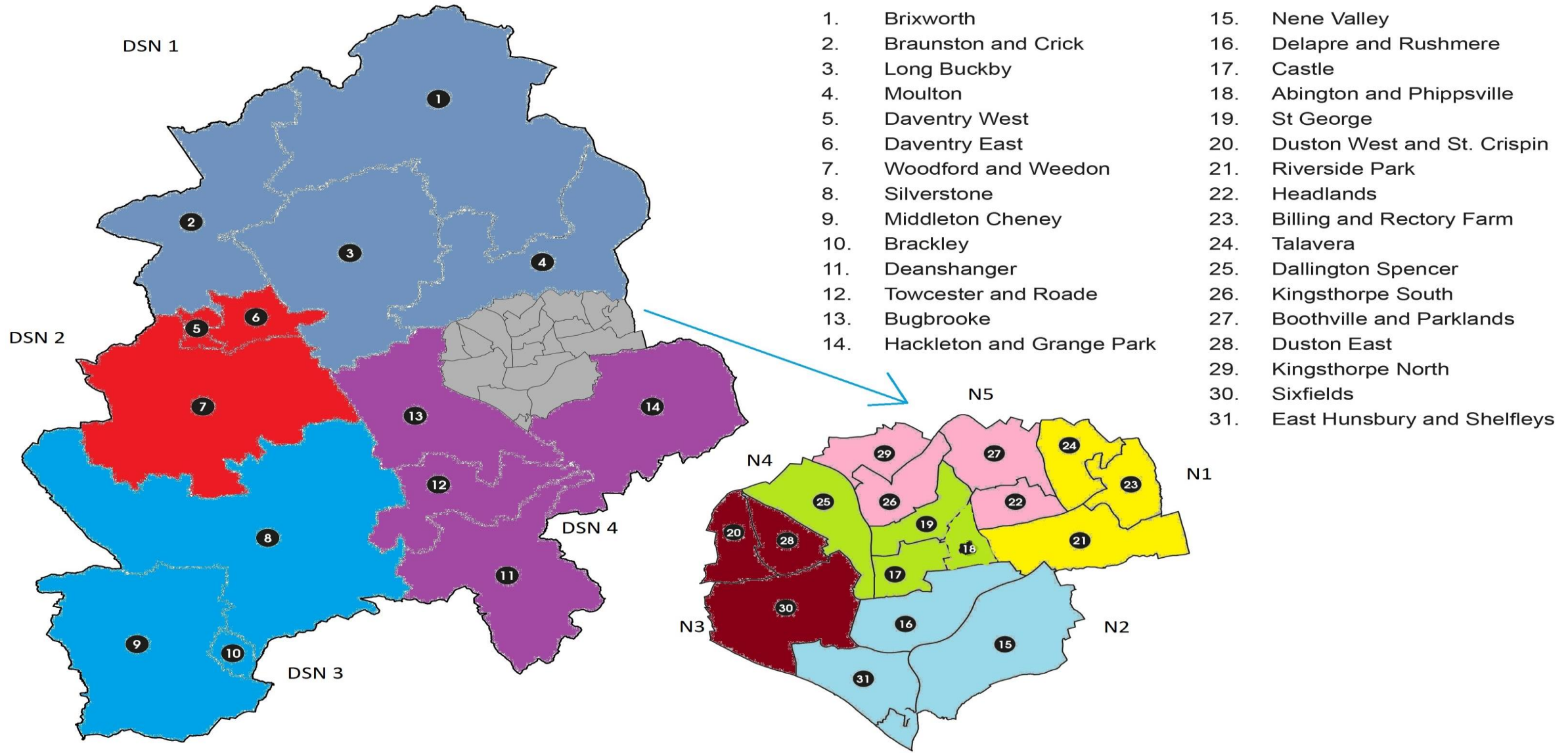
WNC Executive Place Delivery Board

- Extended Stakeholder involvement in WNC Place development and delivery.
- Broad membership from key organisations integral to the delivery of the LAP model. The new Board will provide collaboration and oversight on the operational delivery implementation of the WNC Place operating model.
- NGH, NHFT, Police, GP, Public Health, VCSE, ICB, Parish Councils, GP ICS Board, Community Pharmacy, Fire, Childrens Trust, Police & Crime Commissioner, EMAS, Comms & Engagement.
- Reaching out to Dentists, Optometrists and Business leaders to join.

Local Area Partnerships

Integrated Care
Northamptonshire

West Northamptonshire Unitary | Electoral Wards



Development of LAPs – story so far

- **Objective:** Health services, care services and wider determinates of heath services integrated at a local level to focus on the needs of the community.
- 2 Pioneer sites identified to accelerate and test out how the LAP model might practically work.
- LAP N4 in Northampton, LAP DSN4 in Daventry & South Northants
- GPs mapped to LAPs.
- ASC on a LAP footprint.
- Council services adopting LAP approach where sensible.
- Neighbourhood Working Groups.
- VCSE engaged and will provide support to LAPs on a thematic basis.
- Police “beats” arranging themselves into LAPs.
- Links to iCAN welfare support teams to enhance access to services.
- Local Area Profile data to inform LAP priority setting.
- Asset mapping of LAPs.
- Asset based community engagement and coproduction.
- Links to WNC Anti-poverty Strategy Action Plan.

DSN4

Bugbrooke
Towcester and Roade
Deanshanger
Hackleton and Grange Park

N4

Dallington Spencer
Castle
Abington and Phippsville
St George

N4 Local Area Profile (1)

Initial Themes: Unemployment, Crime, Healthy lifestyles, Housing

- Unemployment
- Universal Credit claimants + number of Universal Credit claimants in employment
- Deprived neighbourhood: Education, health, living environment, crime
- Children in relative low income families
- Overcrowded, and small housing
- Number of households not connected to the gas network
- Crime: violent, criminal damage, anti-social behaviour, burglaries, robberies, vehicle crimes
- Life expectancy lower
- Significantly High proportion of: Coronary Heart Disease, Circulatory disease, Respiratory Disease.
 - Slightly lower: Cancer, Stroke
- Over double national average of people living in health deprivation 'hotspots'

N4 Local Area Profile (2)

- Emergency hospital admissions:
 - Chronic-obstructive pulmonary disease (over double national number)
 - Stroke
 - Coronary heart disease
- Binge drinking and smoking
- Disease prevalence: Depression
- AHAH retail environment domain: high access to fast food outlets, pubs, off-licenses, tobacconists, gambling outlets
- Debt: personal debt per head, SME lending debt per head
- Economy: Income and fuel poverty

- Two Community Safety and Engagement Officers and a Community Development Officer working in this area
- Roles are focused on partnership working, delivery of the community safety priorities and the actions that are developing within the anti-poverty strategy
- Neighbourhood Working Groups
 - Membership example: Youth providers, Children's Trust, Ward Cllrs, Police, Fire service, CVS groups, Schools, NPH
 - Kings Heath, Castle, St James, Semilong, Bouverie, Park Management Committee
- The Neighbourhood Working Groups and the Park Management Committee have a set of action plans which cover their work programme
- Need to link together under the LAP

West Place Pioneer LAP Development

LAP Membership

Elected members; Local GPs; VCSE; Public Health; WNC DASS & DCS; WNC Place Director

N4 LAP Emerging Themes

- Respiratory disease, Crime, Young People
- Respiratory: Initiatives for black women; Children with asthma
- Crime: ~50% of crime in Northampton is caused by people living in N4 – extended invitation to Police for representation on the N4 LAP membership
- Improved access to talking therapies through foodbanks and warm spaces
- Linked Community Development Workers with GPs and Elected members

DSN4 LAP Emerging Themes

- Family hub in Towcester – Co-location at The Forum in Towcester - Birth registrations, 12 week scan, Midwifery, Health Visitors, early years, Childrens social care, mums & tots
- Access to Job Centre facilities in Towcester
- Cross border working challenges
- Distance and travel times to key services

Integrated Care Northamptonshire

Live your best life

Live your best life

